



MARKING SYSTEMS

TRADITIONAL

# TECHNOLOGIES

IMPACT, ROLL MARKING, ROLL MARKING, HOT FOIL, CHEM-ETCH MACHINE



1940 | PRESENT DAY



**Automator provides quality designs, world class production and sales of industrial marking machines and systems worldwide since 1940.** In 2020, Automator celebrated its 80th year in business. This means 80 years of knowledge in International Industrial Production in all market segments and all product marking applications! 80 years in satisfying customers with excellent pre and after-sales support! 80 years in Research & Development for machine innovation. With emphasis on inventing new technologies, improving existing technologies, and contributing year after year to push the whole industrial part marking sector towards new goals and new horizons.

Since its early years, **Automator** has always focused on industrial marking. Always imagining, planning and providing the most advanced technologies for this industry.

## AUTOMATOR: BRINGING THE FUTURE TO THE INDUSTRIAL MARKING SEGMENT



1940 - 1950  
MECHANICAL MACHINES



1960 - 1970  
PNEUMATIC AND ELECTRIC-PNEUMATIC IMPACT MACHINES



1980  
DOT PEEN ELECTRONIC MARKERS



2000  
LASER MARKER

## How can one of our customers benefit from our 80 years of experience?

- 80 years in business means we have an extensive **KNOWLEDGE** of marking applications in all market segments and all related industries.
- 80 years in business means a huge **EXPERTISE** in pre-sales activities, especially for understanding customer needs and the ability to help qualify the solution best suited for the job.
- 80 years in business means that all Automator products are the result of **CONTINUOUS IMPROVEMENTS**, technological stratification, upgrades and innovation.
- 80 years in business means a huge **EXPERTISE** in after-sales activities, such as education and support.
- 80 years in business means **STABILITY!** Automator will always be beside you, helping you in all your marking needs!

## Our technologies

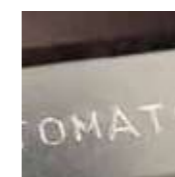
**Automator Marking Systems** provides all industrial marking technologies, Traditional mechanical machines, pneumatic or electric-pneumatic Impact, Roll Marking, Hot Marking, and state-of-the-art technologies for Laser, Dot Peen and Scribe Marking.



LASER MARKING



DOT PEEN MARKING



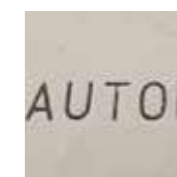
IMPACT MARKING



SCRIBE MARKING



ROLL MARKING



HOT FOIL MARKING



CHEM ETCH MARKING

# MB15, MB20, MB32

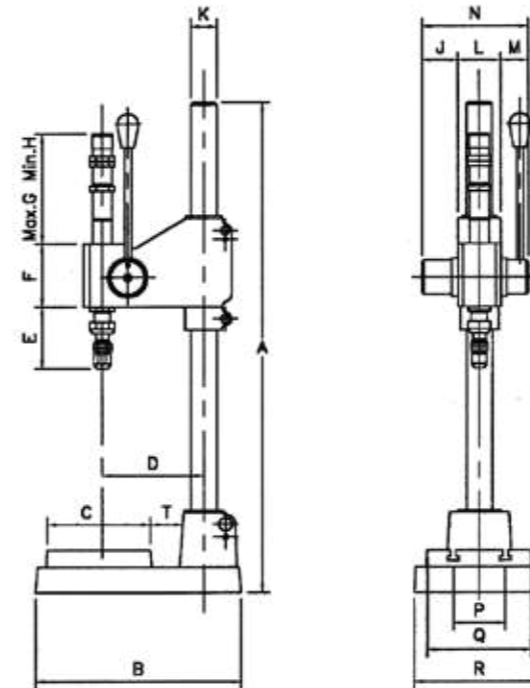
## EASY MARKING, IN ONE SINGLE MOVEMENT!

Ideal for deep and fast markings of numbers, texts and logos.  
Uniform marking depth even on pieces of different heights.

The impact system prevent any deformation of the material  
Suitable also for machinings, such as rivetting, inserting, caulking.



|                            | MB15        | MB20        | MB32        |
|----------------------------|-------------|-------------|-------------|
| Dimension (mm)             | 132x450x210 | 205x650x309 | 280x850x443 |
| Adjustable power (kg / kN) | 500 / 5     | 3000 / 30   | 6500 / 65   |
| Item maximum height (mm)   | 260         | 330         | 370         |
| Weight (kg)                | 10          | 33          | 99          |
| Cava a T (mm)              | 6           | 10          | 12          |
| Shank diameter (mm)        | 8x32        | 10x38       | 16x48       |
| Rack stroke (mm)           | 30          | 60          | 100         |
| Tool-holder stroke (mm)    | 8           | 18          | 22          |
| Usable stroke (mm)         | 22          | 42          | 78          |



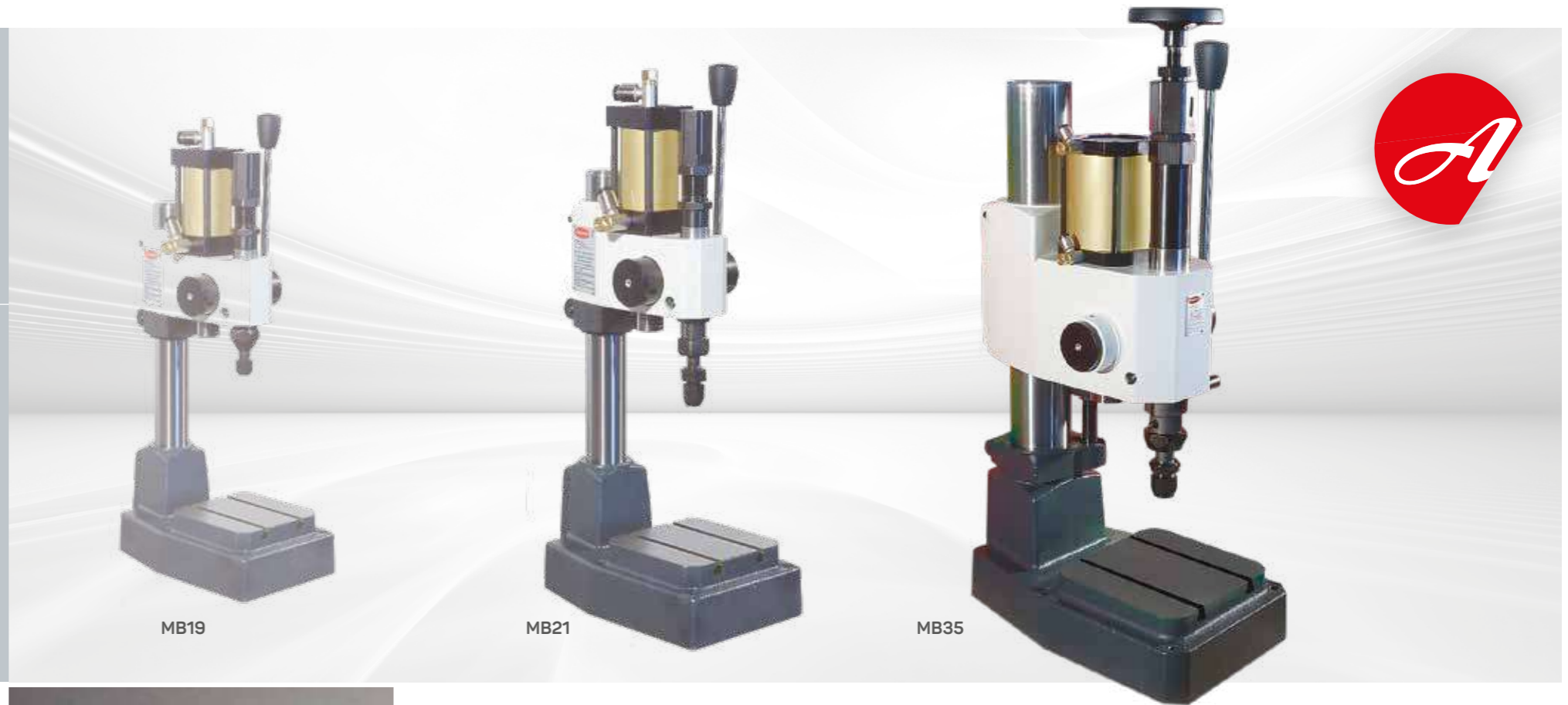
Measures in mm

|   | MB15 | MB20 | MB32 |
|---|------|------|------|
| A | 450  | 650  | 850  |
| B | 210  | 309  | 443  |
| C | 100  | 160  | 230  |
| D | 112  | 160  | 230  |
| E | 50   | 110  | 155  |
| F | 60   | 102  | 180  |
| G | 130  | 180  | 360  |
| H | 95   | 118  | 325  |
| K | 30   | 42   | 70   |
| J | 29   | 57,5 | 66,5 |
| L | 48   | 66   | 106  |
| M | 30   | 43,5 | 62   |
| N | 110  | 166  | 234  |
| P | 47   | 75   | 113  |
| Q | 101  | 160  | 220  |
| R | 132  | 205  | 280  |
| T | 40   | 50   | 70   |

# MB19, MB21, MB35

## SENSIBILITY, PRECISION AND SPEED!

Pneumatic actuation of the marking impact mechanism by a double effect cylinder. Ideal for deep and fast markings of numbers, texts and logos.  
Uniform marking depth even on pieces of different heights.  
The impact system prevent any deformation of the material.  
Suitable also for machinings, such as rivetting, inserting, caulking.  
Available accessories, such as cliches, types and numbering heads for custom markings.

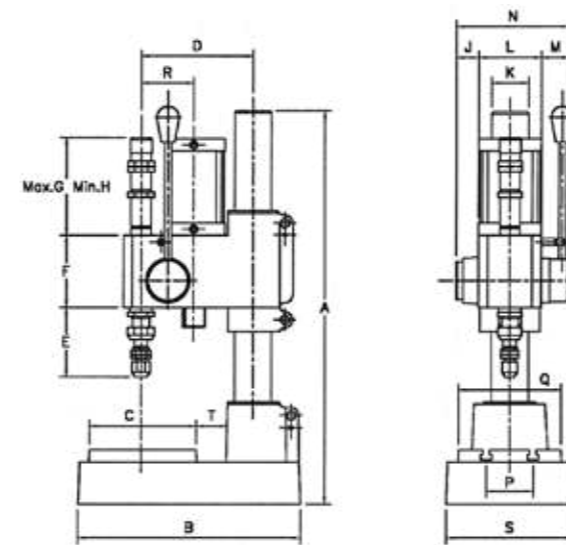


MB19

MB21

MB35

|                            | MB19        | MB21        | MB35        |
|----------------------------|-------------|-------------|-------------|
| Dimension (mm)             | 138x138x225 | 208x600x355 | 300x840x505 |
| Adjustable power (kg / kN) | 600 / 6     | 3500 / 35   | 7500 / 75   |
| Item maximum height (mm)   | 175         | 270         | 300         |
| Weight (kg)                | 14,5        | 53          | 162         |
| T Slot (mm)                | 6           | 10          | 12          |
| Shank diameter (mm)        | 8x32        | 10x38       | 16x48       |
| Rack stroke (mm)           | 30          | 60          | 85          |
| Tool-holder stroke (mm)    | 8           | 18          | 22          |
| Usable stroke (mm)         | 22          | 42          | 63          |
| Max air pressure (bar)     | 4           | 6           | 6           |
| Air supply (gas)           | 1/8         | 1/4         | 1/4         |



Measures in mm

|   | MB19  | MB21 | MB35  |
|---|-------|------|-------|
| A | 380   | 600  | 840   |
| B | 225   | 355  | 505   |
| C | 112   | 176  | 240   |
| D | 112   | 180  | 260   |
| E | 45    | 120  | 160   |
| F | 65    | 118  | 182   |
| G | 120   | 160  | 355   |
| H | 90    | 110  | 270   |
| K | 36    | 60   | 100   |
| J | 20,5  | 37   | 44    |
| L | 56    | 102  | 170   |
| M | 34    | 44   | 54    |
| N | 110,5 | 183  | 270,5 |
| P | 49    | 80   | 113   |
| Q | 112   | 168  | 243   |
| R | 55    | 84   | 112   |
| S | 138   | 208  | 300   |
| T | 29    | 45   | 70    |

# COMPACT VP

## PERFECT FOR INTEGRATION!

Ideal for deep and fast markings of numbers, texts and logos.  
 Uniform marking depth even on pieces of different heights.  
 Pneumatic activation by a piston.  
 Installation at any angle and with limit switches.  
 The impact system prevent any deformation of the material.  
 Suitable also for machinings, such as rivetting, inserting, caulking.



MB19VPN

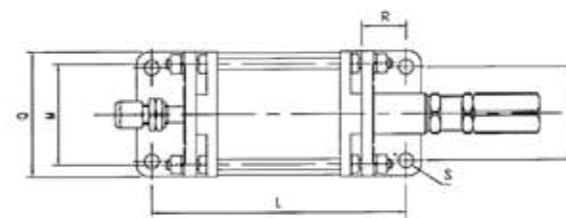
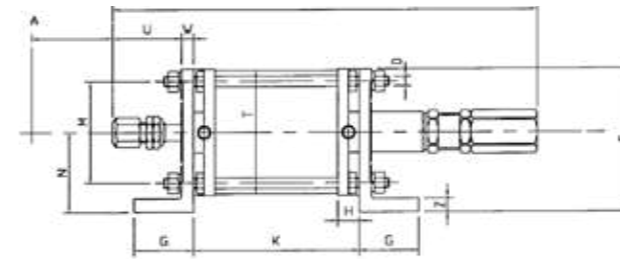


MB21VPN



MB35VPN

|                            | MB19VPN   | MB21VP      | MB35VP      |
|----------------------------|-----------|-------------|-------------|
| Dimension (mm)             | 235x65x78 | 395x115x130 | 670x184x217 |
| Adjustable power (kg / kN) | 600 / 6   | 3500 / 35   | 7500 / 75   |
| Weight (kg)                | 2         | 10          | 38          |
| Shank diameter (mm)        | 8x32      | 10x38       | 16x48       |
| Tool-holder stroke (mm)    | 8         | 18          | 25          |
| Rack stroke (mm)           | 24        | 49          | 85          |
| Piston stroke (mm)         | 32        | 67          | 110         |
| Air pressure (bar)         | 4         | 6           | 6           |
| Air supply (gas)           | 1/8       | 1/4         | 3/8         |



|   | MB19VPN | MB21VP | MB35VP |
|---|---------|--------|--------|
| A | 32      | 55     | 90     |
| C | 235     | 395    | 670    |
| D | M8      | M10    | M16    |
| E | 78      | 130    | 217    |
| G | 45      | 55     | 87     |
| H | 14      | 20     | 32     |
| K | 88      | 153    | 234    |
| L | 158     | 238    | 364    |
| M | 45      | 90     | 140    |
| N | 45      | 72,5   | 130    |
| P | 45      | 90     | 140    |
| Q | 65      | 115    | 184    |
| R | 35      | 42,5   | 65     |
| S | 11      | 14     | 17     |
| T | 60      | 105    | 170    |
| U | 35      | 64     | 110    |
| W | 10      | 12     | 27     |
| Z | 10      | 12     | 20     |

Measures in mm

# UNITÀ

## MARKING MADE EASY!

Ideal for deep and fast markings of numbers, texts and logos.  
 Uniform marking depth even on pieces of different heights.  
 Installation at any angle.  
 The impact system prevent any deformation of the material.  
 Suitable also for machinings, such as rivetting, inserting, caulking.  
 Available accessories, such as cliches, types and numbering heads for custom markings.



MB 15/19

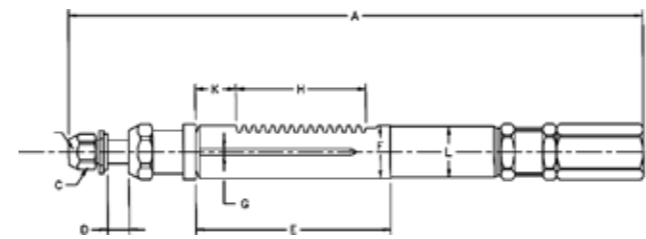
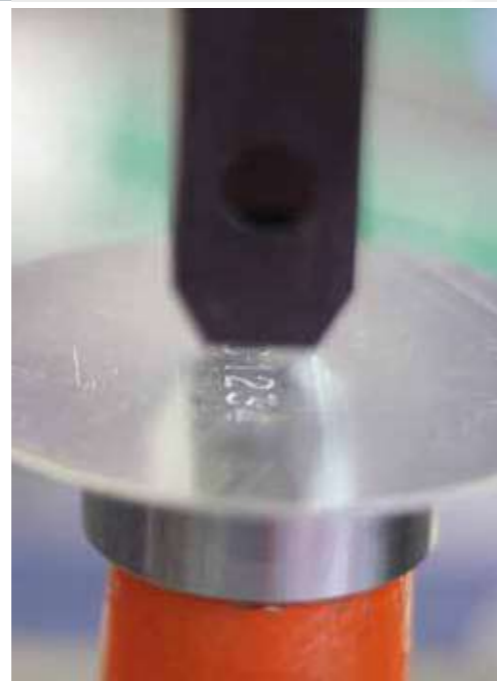


MB 20/21



MB 32/35

|                            | MB15/19 | MB20/21   | MB32/35   |
|----------------------------|---------|-----------|-----------|
| Length (mm)                | 240     | 392       | 690       |
| Adjustable power (kg / kN) | 500 / 5 | 3000 / 30 | 6500 / 65 |
| Weight (kg)                | 0,6     | 2,1       | 10,2      |
| Shank diameter (mm)        | 8x32    | 10x38     | 16x48     |
| Rack stroke (mm)           | 30      | 60        | 100       |
| Tool-holder stroke (mm)    | 8       | 18        | 22        |
| Usable stroke (mm)         | 22      | 42        | 78        |



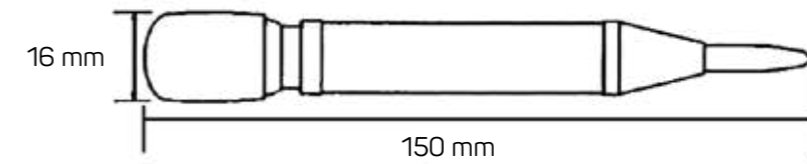
Measures in mm

|   | MB15/19 | MB20/21 | MB32/35 |
|---|---------|---------|---------|
| A | 240     | 392     | 690     |
| B | 6-8     | 10      | 16      |
| C | 13-17   | 24      | 36      |
| D | 8       | 17      | 22      |
| E | 80      | 137     | 224     |
| F | 25      | 36      | 60      |
| G | 3       | 6       | 7       |
| H | 51      | 94,2    | 131,9   |
| K | 16      | 21      | 61      |
| J | 1,25    | 2       | 2       |
| L | 24      | 34      | 58      |

# MICRO

## THE SMALLEST MARKING SYSTEM IN THE WORLD!

Actuated by the simple pressing of the palm.  
 Maximum adjustable power up to 50 kg.  
 Center punch for creating a dimple in any material.  
 Provided with a tip for tracing and cheselling.  
 Excellent for marking one standard letter, number or symbol, in 2,5 mm character height or in 3 mm upon request.



|   | 1 | 2 | 3 | 4 | 5 | 6 | 7 | 8 |
|---|---|---|---|---|---|---|---|---|
| A | □ | ♥ | ▲ | ∞ | ♠ | ○ | △ | ⊗ |
| B | ⊕ | ⊖ | ⊗ | ⊘ | ⊙ | ⊚ | ⊛ | ⊜ |
| C | ⊝ | ⊞ | ⊟ | ⊠ | ⊡ | ⊢ | ⊣ | ⊤ |
| D | ⊥ | ♣ | ♠ | ♣ | ♠ | ♣ | ♠ | ♣ |
| E | ♣ | ♠ | ♣ | ♠ | ♣ | ♠ | ♣ | ♠ |
| F | ♣ | ♠ | ♣ | ♠ | ♣ | ♠ | ♣ | ♠ |
| G | ♣ | ♠ | ♣ | ♠ | ♣ | ♠ | ♣ | ♠ |

# MB20E, MB21E, MB21EU

## IDEAL TO MARK FABRICS, PLASTICS AND WOOD!

Manual or pneumatic actuation of the rack.  
Equipped with lever to move the hot press mechanism.  
Equipped with automatic ribbon advance device.  
Equipped with thermostat to adjust the temperature in relation with the material and the marking time. Perfect for dry marking and colored marking with a ribbon between the marking head and the surface to be marked. Available accessories, such as clichés, types and numbering heads for custom markings.

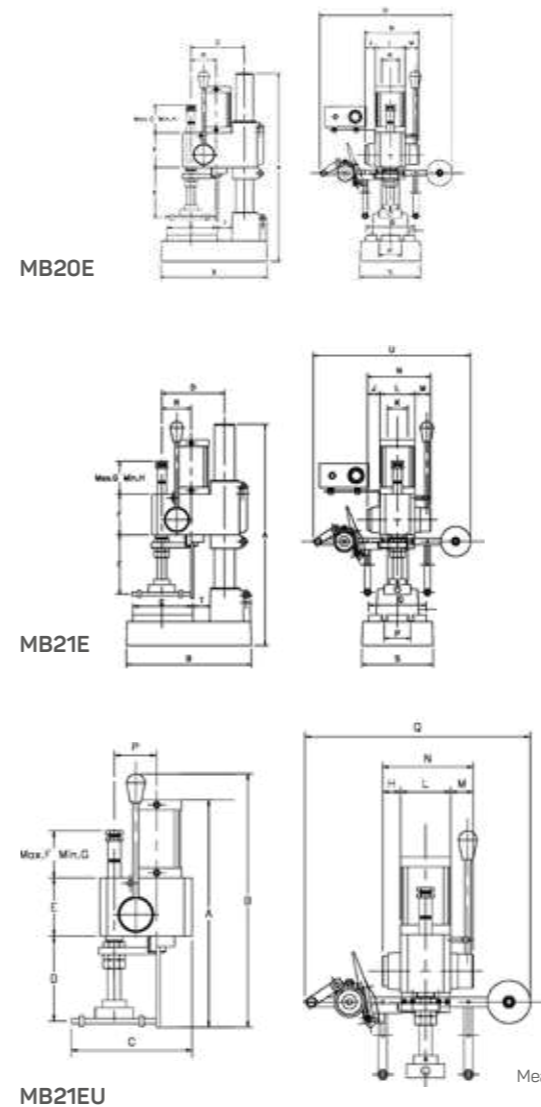


MB21E

MB21EU

MB20E

|  | MB20E       | MB21E       | MB21EU      |
|--|-------------|-------------|-------------|
| Dimension (mm)                                   | 205x650x309 | 208x600x355 | 435x250x475 |
| Adjustable power (kg / kN)                       | 50 / 0,5    | 150 / 1,5   | 150 / 1,5   |
| Item maximum height (mm) / Hithout heating block | 275<br>385  | 206<br>318  |             |
| Cava a T (mm)                                    | 10          | 10          |             |
| Weight (kg)                                      | 38,5        | 58          | 27,5        |
| Shank diameter (mm)                              | dia 27      | dia 27      | dia 27      |
| Rack stroke (mm)                                 | 65          | 67          | 67          |
| Usable stroke (mm)                               | 65          | 67          | 67          |



MB20E

MB21E

MB21EU

Measures in mm

|    | MB20E | MB21E | MB21EU |
|----|-------|-------|--------|
| A  | 650   | 600   | 435    |
| B  | 309   | 355   | 355    |
| C  | 160   | 176   | 250    |
| D  | 160   | 180   | -      |
| D1 | -     | -     | 177    |
| D2 | -     | -     | 65     |
| E  | -     | -     | 115    |
| E1 | 60    | 177   | -      |
| E2 | 170   | 65    | -      |
| F  | 102   | 118   | 150    |
| G  | 85    | 150   | 110    |
| H  | 55    | 110   | 40     |
| K  | 42    | 60    | -      |
| J  | 57,5  | 37    | -      |
| L  | 66    | 102   | 100    |
| M  | 42,5  | 44    | 44     |
| N  | 166   | 183   | 184    |
| P  | 75    | 80    | 84     |
| Q  | 160   | 168   | 475    |
| R  | 205   | 84    | -      |
| S  | 205   | 208   | -      |
| T  | 45    | 50    | -      |
| U  | 50    | 475   | -      |



# MB - S

## VERY PRECISE FOR SMALL JOBS!

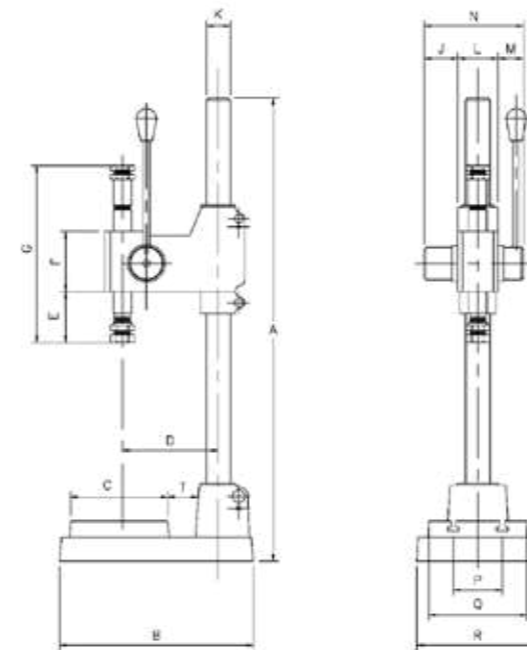
### Manual rack activation presses.

Ideal for riveting, inserting, bending, caulking.  
Manual activation of the rack by a lever.

Maximum sensitivity and precision with strict rack adjustment.



|                            | MB15S       | MB20S       | MB32S       |
|----------------------------|-------------|-------------|-------------|
| Dimension (mm)             | 132x450x210 | 205x750x309 | 280x850x443 |
| Adjustable power (kg / kN) | 50/0,5      | 70/0,7      | 90/0,9      |
| Item maximum height (mm)   | 265         | 385         | 460         |
| Weight (kg)                | 10          | 33          | 99          |
| Cava a T (mm)              | 6           | 10          | 12          |
| Shank diameter (mm)        | dia 13      | dia 27      | dia 27      |
| Rack stroke (mm)           | 27          | 65          | 100         |
| Usable stroke (mm)         | 27          | 65          | 100         |



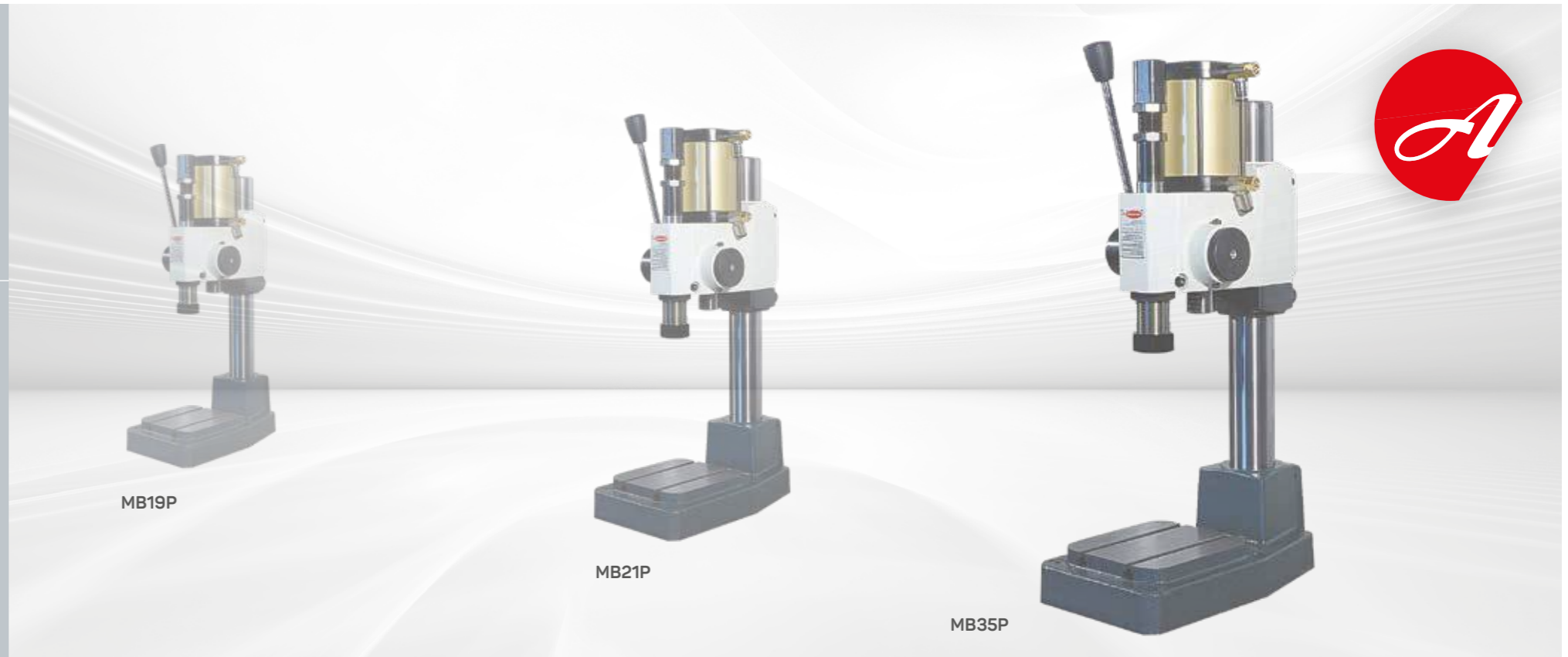
Measures in mm

|   | MB15S | MB20S | MB32S |
|---|-------|-------|-------|
| A | 450   | 750   | 850   |
| B | 210   | 309   | 443   |
| C | 100   | 160   | 220   |
| D | 112   | 160   | 230   |
| E | 40    | 60    | 60    |
| F | 59    | 102   | 180   |
| G | 155   | 250   | 430   |
| K | 30    | 42    | 70    |
| J | 29    | 57,5  | 66,5  |
| L | 48    | 66    | 106   |
| M | 32    | 42,5  | 61,5  |
| N | 109   | 166   | 234   |
| P | 50    | 80    | 120   |
| Q | 100   | 160   | 220   |
| R | 132   | 205   | 280   |
| T | 38    | 45    | 70    |

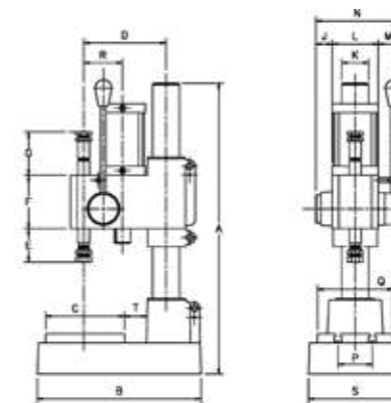
# MB - P

## FORCE AND SENSIBILITY!

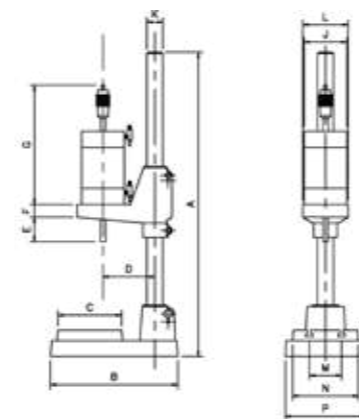
**Impact mechanism for integration.** Ideal for getting a fast and deep marking of logos, texts and numbers. Pneumatic actuation of the rack through a double effect piston. Installation at any angle. Maximum sensitivity and precision with strict rack adjustment. Bankholder effect to prevent any deformation of the material. Same marking depth on items of different heights. Many accessories available, such as clichè, types, type holders, numbering heads to personalize the marking. Suitable also for machining operators for pressing, rivetting, inserting, bending and caulking.



|                            | MB19P       | MB21P       | MB35P       |
|----------------------------|-------------|-------------|-------------|
| Dimension (mm)             | 138x350x225 | 208x600x355 | 300x800x505 |
| Adjustable power (kg / kN) | 100/1       | 250/2,5     | 450/4,5     |
| Item maximum height (mm)   | 175         | 318         | 380         |
| Weight (kg)                | 14,5        | 53          | 162         |
| Cava a T (mm)              | 6           | 10          | 12          |
| Shank diameter (mm)        | dia 13      | dia 27      | dia 27      |
| Rack stroke (mm)           | 22          | 67          | 80          |
| Usable stroke (mm)         | 22          | 67          | 80          |
| Maximum air pressure (bar) | 4           | 6           | 6           |
| Air supply (gas)           | 1/8         | 1/4         | 1/4         |



MB19P-21P-35P



MB125P

Measures in mm

|   | MB19P | MB21P | MB35P |
|---|-------|-------|-------|
| A | 350   | 600   | 800   |
| B | 225   | 355   | 505   |
| C | 110   | 176   | 242   |
| D | 112   | 180   | 268   |
| E | 40    | 65    | 67    |
| F | 65    | 118   | 172   |
| G | 45    | 110   | 175   |
| K | 36    | 60    | 100   |
| J | 20,5  | 37    | 44    |
| L | 56    | 102   | 170   |
| M | 34    | 44    | 56,5  |
| N | 110,5 | 183   | 274,5 |
| P | 46    | 80    | 113   |
| Q | 110   | 168   | 242   |
| R | 55    | 84    | 112   |
| S | 138   | 208   | 300   |
| T | 27    | 50    | 72    |

# MB41

## ROLL MARKING MACHINES FOR SMALL DIAMETERS

Ideal for marking small diameters, from 8 to 65mm.  
Manual or electric activation of the rack.

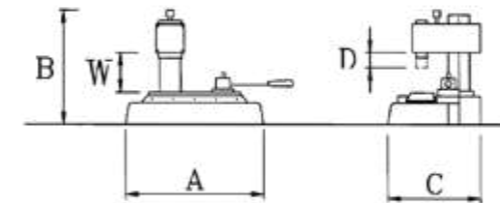
Double rolls support or with central pivot for marking cables.  
Standard accessories complete the range of roll machines for marking small diameters; from types and cliché to adjustable supports and supports for cave objects.



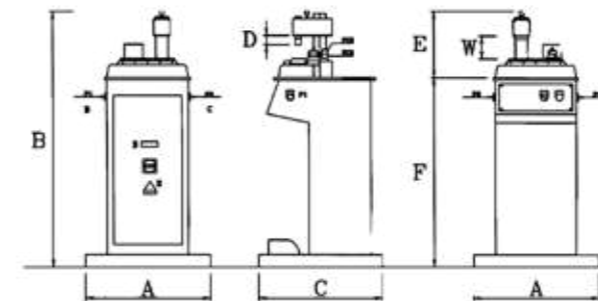
MB41E

MB41N

|                       | MB41N       | MB41E                             |
|-----------------------|-------------|-----------------------------------|
| Dimension (mm)        | 295x300x240 | 600x1090x600                      |
| Bank                  |             |                                   |
| Motor power (kw / V)  |             | 0,18/380                          |
| Motor                 |             | 380 trif. 50 Hz<br>110 mono 60 Hz |
| Weight (kg)           | 35          | 110                               |
| Maximum diameter (mm) | 65          | 65                                |
| Stroke (mm)           | 120         | 120                               |



MB41N



MB41E

Measures in mm

|   | MB41N | MB41E |
|---|-------|-------|
| A | 355   | 600   |
| B | 255   | 1090  |
| C | 245   | 600   |
| D | 37    | 30    |
| E | -     | 300   |
| F | -     | 760   |
| G | -     | -     |
| H | -     | -     |
| I | -     | -     |
| L | -     | -     |
| M | -     | -     |
| N | -     | -     |
| O | -     | -     |
| P | -     | -     |
| X | -     | -     |
| Y | -     | -     |
| Z | -     | -     |
| W | 135   | 135   |

# MB71

## DEEP AND FAST MARKING

Roll marking machines for medium diameters.  
Perfect for marking diameters up to 110mm.

Manual, electric or electro-pneumatic models.  
Double rolls support or with central pivot for marking cables.  
Many standard accessories both for the marking heads - numberings, clichè, interchangeable types - and for the supports - for cave or round pieces..

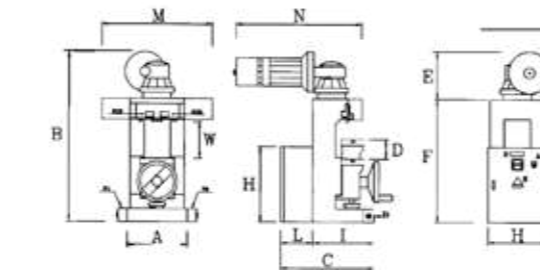


MB71E

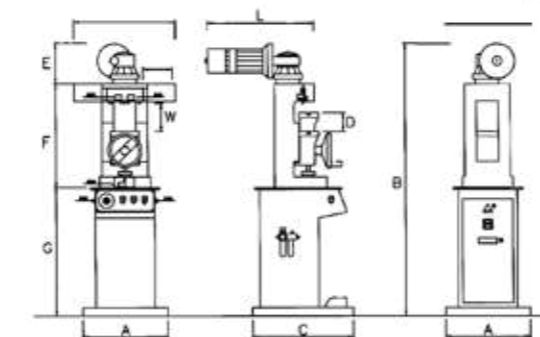
MB71EP

MB71N

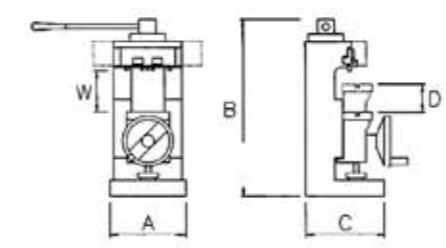
|                            | MB71N       | MB71E                             | MB71EP                            |
|----------------------------|-------------|-----------------------------------|-----------------------------------|
| Dimension (mm)             | 340x830x310 | 360x1020x500                      | 600x1730x600                      |
| Bank                       |             |                                   | .                                 |
| Motor power (kw / V)       |             | 0,55/380                          | 0,55/380                          |
| Motor                      |             | 380 trif. 50 Hz<br>110 mono 60 Hz | 380 trif. 50 Hz<br>110 mono 60 Hz |
| Weight (kg)                | 126         | 138                               | 230                               |
| Maximum diameter (mm)      | 110         | 110                               | 110                               |
| Stroke (mm)                | 180         | 180                               | 180                               |
| Cava a T (mm)              | 10          | 10                                | 10                                |
| Maximum air pressure (bar) |             |                                   | 6-8                               |
| Pneumatic bank             |             |                                   | .                                 |



MB71E



MB71EP



MB71N

Measures in mm

|   | MB71E | MB71EP | MB71N |
|---|-------|--------|-------|
| A | 340   | 340    | 600   |
| B | 830   | 1020   | 1730  |
| C | 310   | 500    | 600   |
| D | 110   | 110    | 230   |
| E | -     | 240    | 177   |
| F | -     | 730    | 65    |
| G | -     | 350    | 115   |
| H | -     | 450    | -     |
| I | -     | 310    | 480   |
| L | -     | 190    | 560   |
| M | -     | 480    | -     |
| N | -     | 560    | -     |
| O | -     | -      | -     |
| P | -     | -      | -     |
| X | -     | -      | -     |
| Y | -     | -      | -     |
| Z | -     | -      | -     |
| W | 225   | 225    | 84    |

# MB71U

## VERY EASY FOR INTEGRATION

### Roll marking unit.

Especially designed for integration in production lines and transfers MB71UE rolling marking electric unit has a motor and 2 endswitch for running the slide of 180 mm stroke.

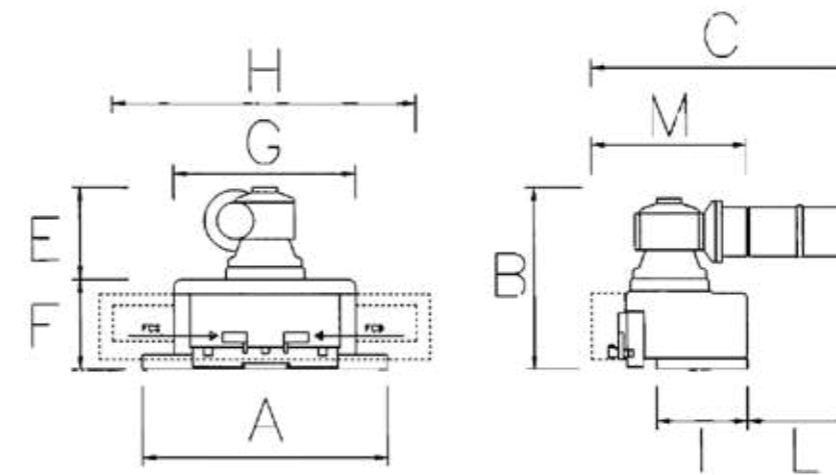
Many standard accessories available, such as types, clichè and numbering heads, to personalize the marking.



MB71U

|                      | MB71U                             |
|----------------------|-----------------------------------|
| Dimension (mm)       | 400x450x560                       |
| Motor power (kw / V) | 0,55/380                          |
| Motor                | 380 trif. 50 Hz 110<br>mono 60 Hz |
| Weight (kg)          | 50                                |
| Stroke (mm)          | 180                               |

|   | MB71U |
|---|-------|
| B | 225   |
| C | 110   |
| D | 112   |
| E | 40    |
| F | 65    |
| G | 45    |
| H | 36    |
| I | 20,5  |
| L | 56    |
| M | 34    |



Measures in mm

# MB71CE

## UP TO 80 MM DIAMETERS!

### Marking in continuous.

The electric model MB71CE is particularly suitable for continuous marking on bars and tubes, up to 80mm maximum, with a rate of 12mt /minute with 2 rolls.

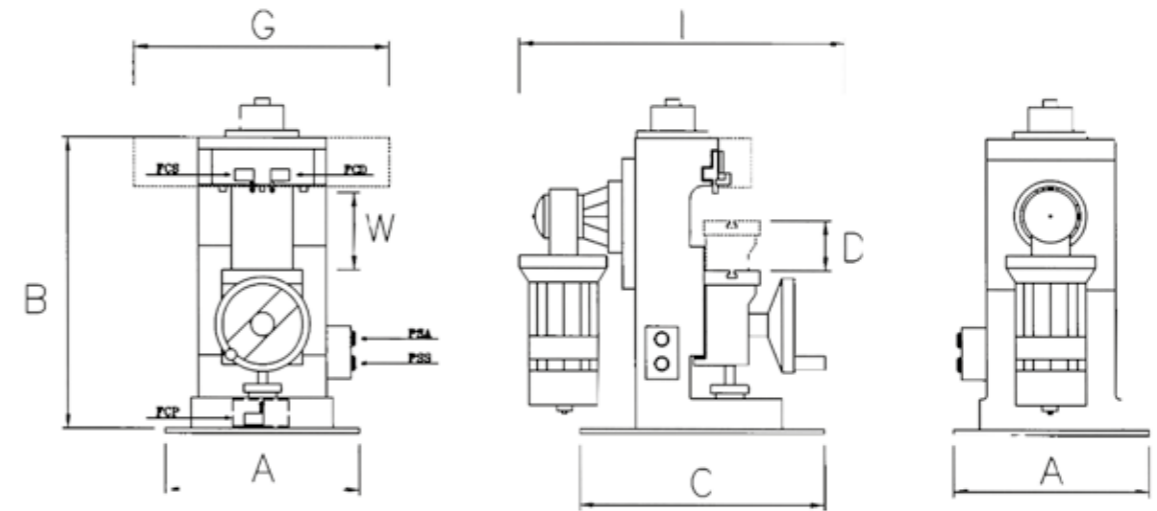
An engraved die or interchangeable types gear the exagons, pulling it through the marking.

Engine: motorgear 380 triphase 50 hz. Standard accessories complete the machine, being so strong, easy and cost effective.



MB71CE

|                      | MB71CE                            |
|----------------------|-----------------------------------|
| Dimension (mm)       | 340x830x310                       |
| Motor power (kw / V) | 0,55/380                          |
| Motor                | 380 trif. 50 Hz 110<br>mono 60 Hz |
| Weight (kg)          | 155                               |
| Cava a T (mm)        | 10                                |



|   | MB71CE |
|---|--------|
| A | 350    |
| B | 225    |
| C | 110    |
| D | 112    |
| G | 40     |
| I | 65     |
| W | 45     |

Measures in mm

# MB76

## FOR BIG AND HEAVY COMPONENTS!

**Roll marking machines for big diameters.**  
 Perfect marking of diameters up to 650mm.  
 Vertical model available in manual, electric or electro-pneumatic.  
 90° models available in electric or electro-pneumatic.

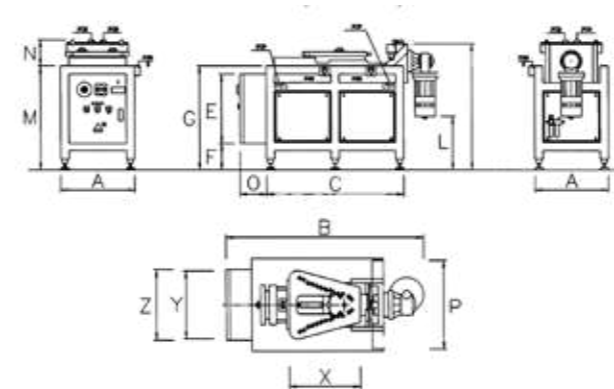
Many accessories available, such as clichè, types, type-holders, to personalize the marking.



MB76EPV

MB76EP90°

|                       | MB76EPV                           | MB76EP90°                         |
|-----------------------|-----------------------------------|-----------------------------------|
| Dimension (mm)        | 730x1785x650                      | 530x1170x1000                     |
| Motor power (kw / V)  | 0,55/380                          | 0,55/380                          |
| Motor                 | 380 trif. 50 Hz<br>110 mono 60 Hz | 380 trif. 50 Hz<br>110 mono 60 Hz |
| Weight (kg)           | 300                               | 360                               |
| Maximum diameter (mm) | 650                               | -                                 |
| Stroke (mm)           | 290                               | 290                               |
| Air pressure (bar)    | 6-8                               | 6-8                               |
| Pneumatic stroke (mm) | 16                                | 16                                |



|   | MB76EPV | MB76EP90° |
|---|---------|-----------|
| A | 730     | 530       |
| B | 1785    | 1170      |
| C | 650     | 1000      |
| D | 280     | -         |
| E | 685     | 500       |
| F | 820     | 190       |
| G | -       | 750       |
| H | 480     | -         |
| I | 560     | 925       |
| L | 180     | 380       |
| M | -       | 750       |
| N | -       | 190       |
| O | -       | 190       |
| P | -       | 480       |
| X | -       | 430       |
| Y | -       | 350       |
| Z | -       | 440       |

Measures in mm

# TYPES

## FOR IMPACT, HOT AND ROLL MARKING

Steel types of high quality, in different heights, available singles or in boxes for impact, hot or rolling.



SHARPENED  
EDGE



HOT



LOW CAPITAL



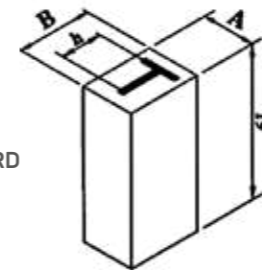
NUCLEAR



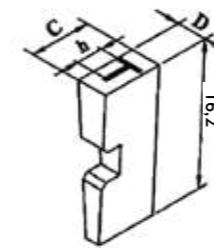
| h (mm)    | 1 | 1,5 | 2 | 2,5 | 3 | 4 | 5 | 6 | 8 | 10 | 12 |
|-----------|---|-----|---|-----|---|---|---|---|---|----|----|
| A sharp   | * | *   | * | *   | * | * | * | * | * | *  | *  |
| A Hot     | * | *   | * | *   | * | * | * | * | * | *  | *  |
| Lowercase | * |     | * |     | * |   |   |   |   |    |    |
| A Dots    |   |     |   |     | * | * | * |   |   |    |    |
| Conic     |   |     | * | *   | * | * |   |   |   |    |    |
| Nuclear   |   |     |   |     |   |   |   | * | * | *  | *  |

| h (mm) | 1   | 1,5 | 2   | 2,5 | 3   | 4   | 5 | 6  | 8  | 10 | 12 |
|--------|-----|-----|-----|-----|-----|-----|---|----|----|----|----|
| A      | 1,5 | 1,5 | 2   | 2,5 | 3   | 4   | 5 | 6  | 8  | 10 |    |
| B      | 4   | 4   | 4   | 6   | 6   | 8   | 8 | 10 | 12 | 14 |    |
| C      |     |     | 5,7 | 5,7 | 5,7 | 5,7 |   |    |    |    |    |
| D      |     |     | 2,5 | 3   | 4   | 4   |   |    |    |    |    |
| E      |     |     |     |     |     |     |   | 16 | 16 | 16 | 16 |
| F      |     |     |     |     |     |     |   | 8  | 8  | 8  | 8  |

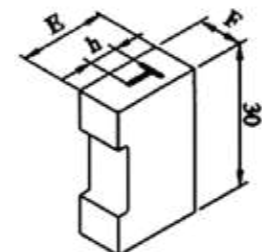
STANDARD  
BLOCK



CONIC  
BLOCK



HILTI  
BLOCK



STANDARD FONT





# LINEAR TYPEHOLDERS

## FOR IMPACT AND ROLL MARKING

Standard 1, 2 or 3 lines typeholders squared with absolutely precision on the faces to grant the perfect allineament of the types and the best quality in marking. For impact, hot or rolling.



TYPES NUMBER PER LINE

| PC<br>h (mm) | 2/4 | 2/4S | 3/4 | 4/4 | 5/4 | 11/6 | 13/6 | 14/6 | 28/6 | 20/8 | 21/8 | 22/8 | 23/8 |
|--------------|-----|------|-----|-----|-----|------|------|------|------|------|------|------|------|
| 1-15         | 9   | 13   | 20  | 33  | 53  |      |      |      |      |      |      |      |      |
| 2            | 7   | 10   | 15  | 25  | 40  |      |      |      |      |      |      |      |      |
| 2,5          |     |      |     |     |     | 8    | 16   | 24   | 32   |      |      |      |      |
| 3            |     |      |     |     |     | 6    | 13   | 20   | 26   |      |      |      |      |
| 4            |     |      |     |     |     |      |      |      |      | 5    | 10   | 15   | 20   |
| 5            |     |      |     |     |     |      |      |      |      | 4    | 8    | 12   | 16   |

TYPES NUMBER PER CAVA 2 LINES

| h (mm) | PC | 6/4 | 7/4 | 15/6 | 15/6S | 30/8 | 24/8 | 25/8 |
|--------|----|-----|-----|------|-------|------|------|------|
| 1-15   |    | 20  | 33  |      |       |      |      |      |
| 2      |    | 15  | 25  |      |       |      |      |      |
| 2,5    |    |     |     | 16   | 32    |      |      |      |
| 3      |    |     |     | 13   | 26    |      |      |      |
| 4      |    |     |     |      |       | 10   | 15   | 20   |
| 5      |    |     |     |      |       | 8    | 12   | 16   |



# CIRCULAR TYPEHOLDERS

## FOR IMPACT

Typeholders for round marking on flat surfaces built on the specific requests of the customer. For impact machines.



TYPES NUMBER PER CAVA 3 LINES

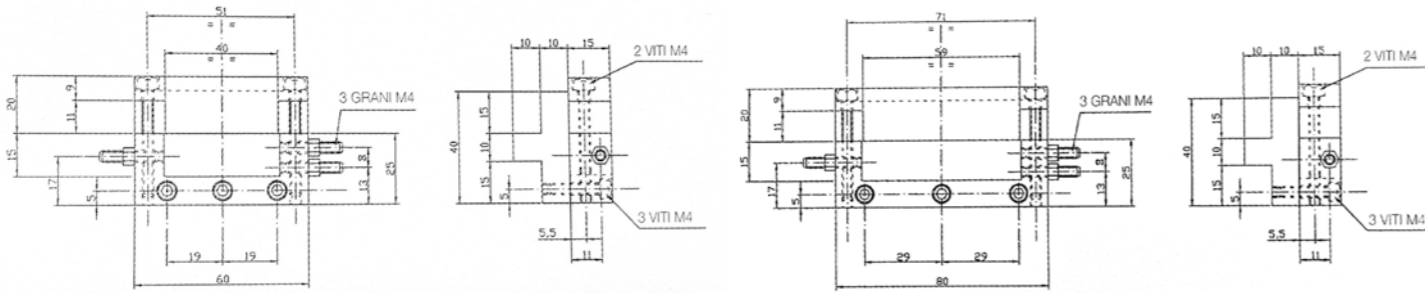
| PC<br>h (mm) | 9/4 | 16/6 | 29/6 | 17/6 | 18/6 | 31/8 | 26/8 | 27/8 |
|--------------|-----|------|------|------|------|------|------|------|
| 1-15         | 26  |      |      |      |      |      |      |      |
| 2            | 20  |      |      |      |      |      |      |      |
| 2,5          |     | 16   | 20   | 24   | 32   |      |      |      |
| 3            |     | 13   | 16   | 20   | 26   |      |      |      |
| 4            |     |      |      |      |      | 10   | 12   | 20   |
| 5            |     |      |      |      |      | 8    | 10   | 16   |



# HOT TYPEHOLDERS

## FOR HOT

Typeholders in steel and brass in two models of 65 and 80 mm for multi line of types in any caracter height.

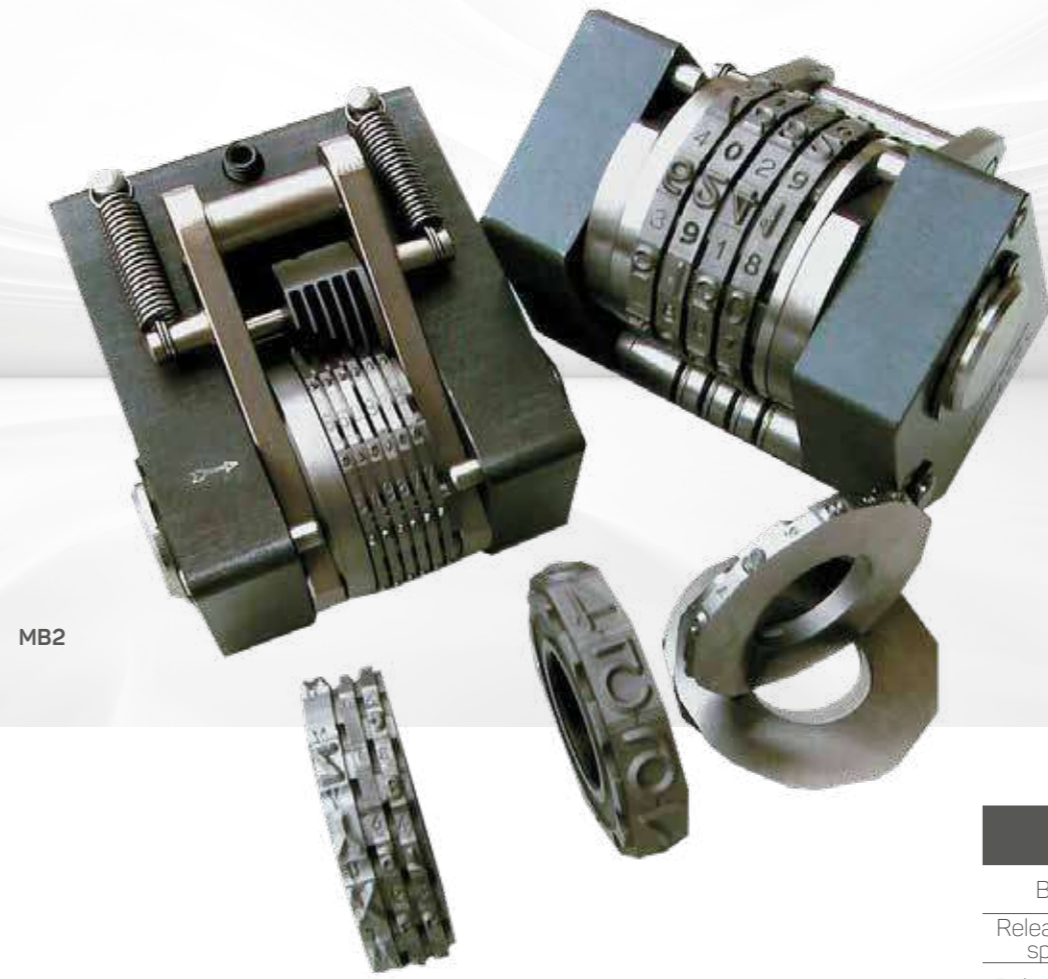


# NUMBERING HEADS

## FOR IMPACT, HOT AND ROLL MARKING

Automatic numbering head MB2 for marking progressive numbers with unit increase each shot.

Engraving of the wheels with numbers, letters, sign and special logos, in standard, half condensed and condensed style. It's possible to mix automatic (B2) and manual (B14) wheels.

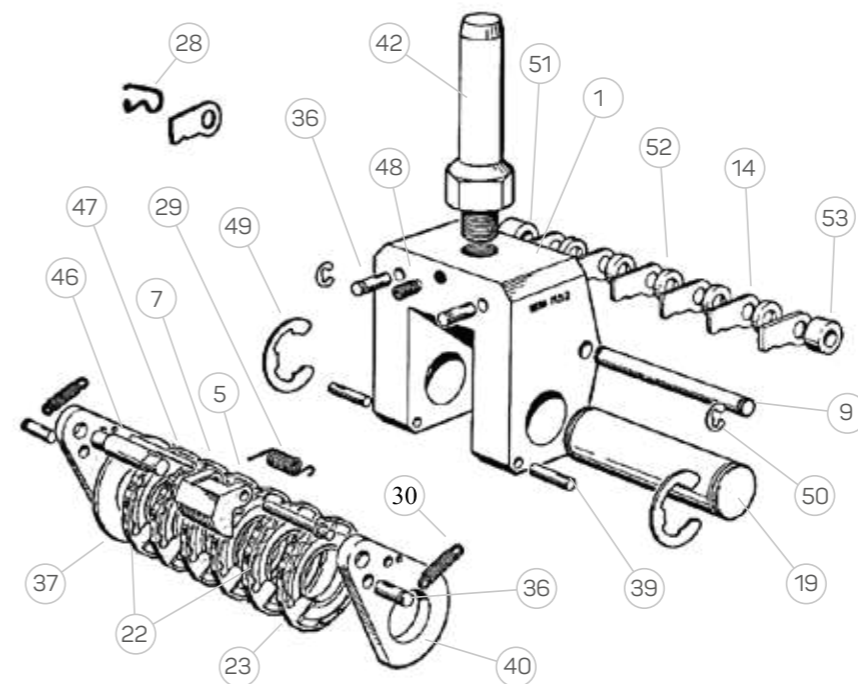


MB2

### INCISION HEIGHT (mm)

|    | 2,5    |             | 3        |      | 4  |    | 5  |    | 6   |     | 8 |  | 10 |  | 10 |  |
|----|--------|-------------|----------|------|----|----|----|----|-----|-----|---|--|----|--|----|--|
|    | Etroit | Demi etroit | Standard |      |    |    |    |    |     |     |   |  |    |  |    |  |
| 2  |        | 3,7         | 5        | 6    | 7  | 9  | 11 | 13 | 17  | 21  |   |  |    |  |    |  |
| 3  |        | 5,9         | 8        | 9,5  | 11 | 14 | 17 | 20 | 26  | 32  |   |  |    |  |    |  |
| 4  |        | 8,1         | 11       | 13   | 15 | 19 | 23 | 27 | 35  | 43  |   |  |    |  |    |  |
| 5  |        | 10,3        | 14       | 16   | 19 | 24 | 29 | 34 | 44  | 54  |   |  |    |  |    |  |
| 6  |        | 12,5        | 17       | 20   | 23 | 29 | 35 | 41 | 53  | 65  |   |  |    |  |    |  |
| 7  |        | 14,7        | 20       | 23,5 | 27 | 34 | 41 | 48 | 62  | 76  |   |  |    |  |    |  |
| 8  |        | 16,9        | 23       | 27   | 31 | 39 | 47 | 55 | 71  | 87  |   |  |    |  |    |  |
| 9  |        | 19,1        | 26       | 30,5 | 35 | 44 | 53 | 62 | 80  | 98  |   |  |    |  |    |  |
| 10 |        | 21,3        | 29       | 34   | 39 | 49 | 59 | 69 | 89  | 109 |   |  |    |  |    |  |
| 11 |        | 23,5        | 32       | 37,5 | 43 | 54 | 65 | 76 | 98  | 120 |   |  |    |  |    |  |
| 12 |        | 25,7        | 37       | 41   | 47 | 59 | 71 | 83 | 107 | 131 |   |  |    |  |    |  |

More wheels available  
 Consult the company



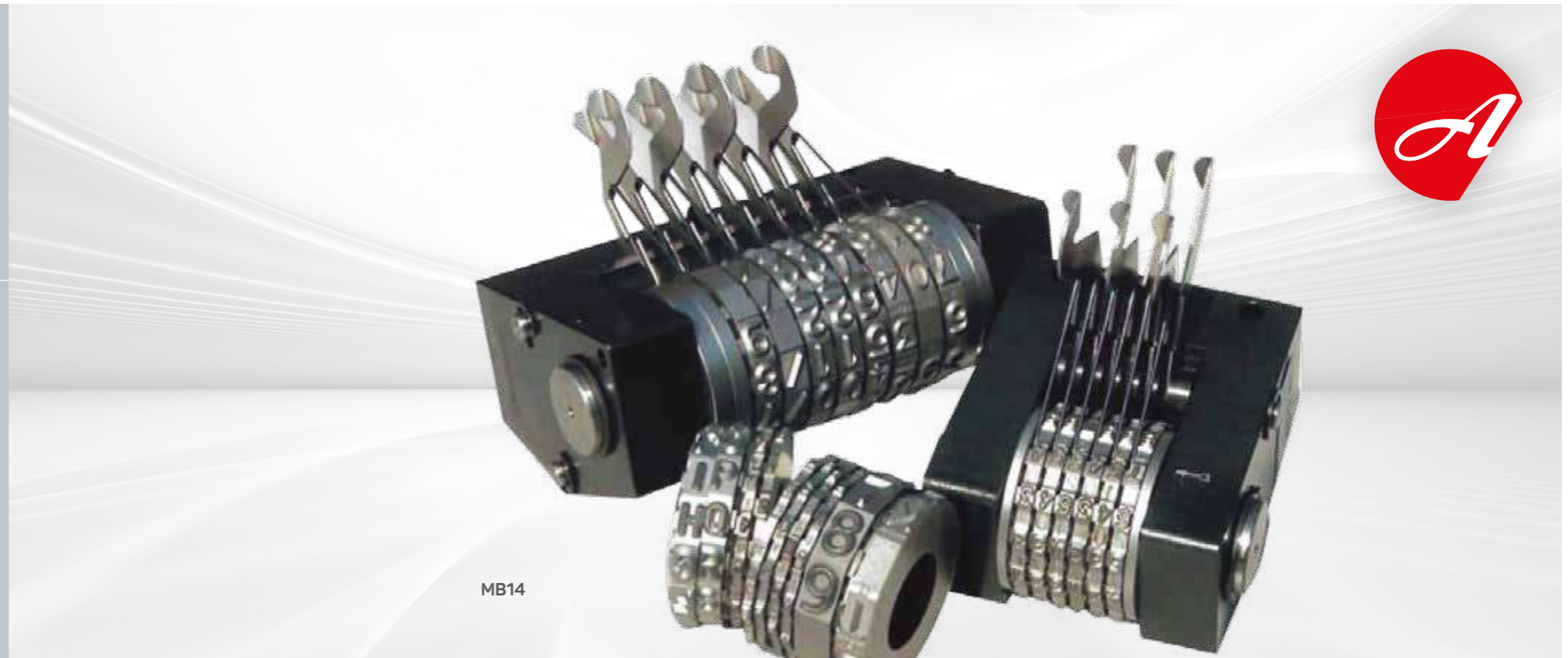
|                       | MB2  |
|-----------------------|------|
| Body                  | 1    |
| Release level spindle | 9    |
| Release lever         | 14   |
| Wheel spindle         | 19   |
| Wheel                 | 22   |
| Lever springs         | 28   |
| Spacing ring          | 37   |
| Shank                 | 42   |
| Blocking screw        | 48   |
| Retaining rings       | 49-0 |
| Spacing ring          | 51-3 |
| Shaft                 | 5    |
| Pawl                  | 7    |
| Unit                  | 23   |
| Spring                | 29   |
| Yoke spring           | 30   |
| Pins                  | 36-9 |
| Yokes                 | 40   |
| Lever rod             | 46   |
| Spring pin            | 47   |

# NUMBERING HEADS

## FOR IMPACT, HOT AND ROLL MARKING

Numbering head MB14 with levers for manual marking of numbers. Engraving of the wheels with numbers, letters, sign and special logos, in standard, half condensed and condensed style.

It's possible to mix automatic (B2) and manual (B14) wheels.



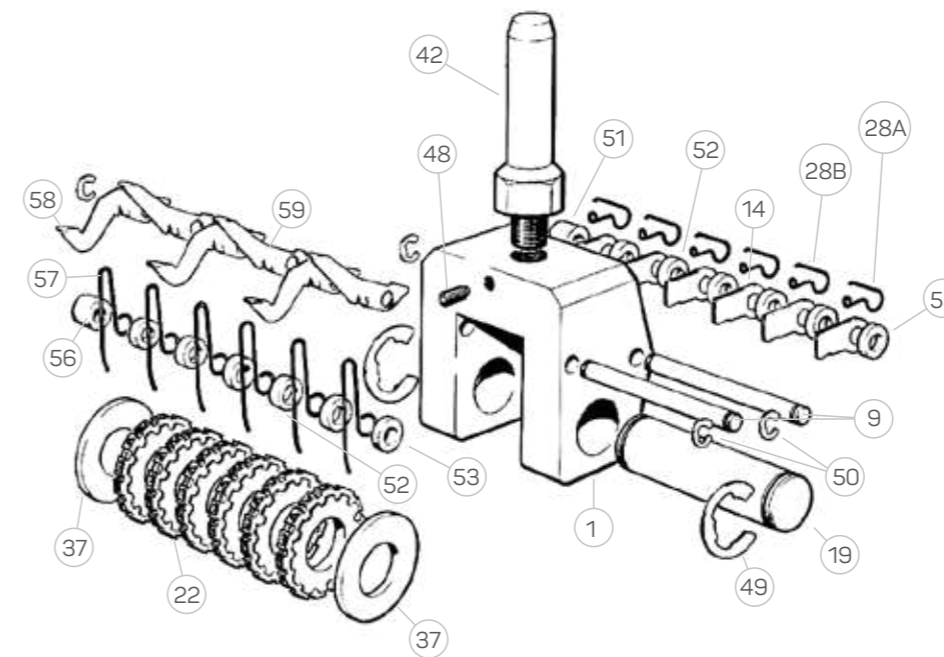
MB14

### INCISION HEIGHT (mm)

| Standard | 2,5<br>2<br>1,5 | 3<br>2,5<br>2 | 4<br>3<br>2,5 | 5<br>4<br>3 | 6<br>5<br>4 | 8<br>6<br>5 | 10<br>8<br>6 | 10<br>8 |
|----------|-----------------|---------------|---------------|-------------|-------------|-------------|--------------|---------|
| 2        | 4               | 5             | 6             | 7           | 9           | 11          | 13           | 17      |
| 3        | 6,5             | 8             | 9,5           | 11          | 14          | 17          | 20           | 26      |
| 4        | 9               | 11            | 13            | 15          | 19          | 23          | 27           | 35      |
| 5        | 11,5            | 14            | 16            | 19          | 24          | 29          | 34           | 44      |
| 6        | 14              | 17            | 20            | 23          | 29          | 35          | 41           | 53      |
| 7        | 16,5            | 20            | 23,5          | 27          | 34          | 41          | 48           | 62      |
| 8        | 19              | 23            | 27            | 31          | 39          | 47          | 55           | 71      |
| 9        | 21,5            | 26            | 30,5          | 35          | 44          | 53          | 62           | 80      |
| 10       | 24              | 29            | 34            | 39          | 49          | 59          | 69           | 89      |
| 11       | 26,5            | 32            | 37,5          | 43          | 54          | 65          | 76           | 98      |
| 12       | 29              | 35            | 41            | 47          | 59          | 71          | 83           | 107     |

More wheels available

Consult the company



|                       | MB14 |
|-----------------------|------|
| Body                  | 1    |
| Release level spindle | 9    |
| Release lever         | 14   |
| Wheel spindle         | 19   |
| Wheel                 | 22   |
| Lever springs         | 28   |
| Spacing ring          | 37   |
| Shank                 | 42   |
| Blocking screw        | 48   |
| Retaining rings       | 49-0 |
| Spacing ring          | 51-3 |
| Medium wheels         | 56   |
| Control spring        | 57   |
| Inferior lever        | 58   |
| Superior lever        | 59   |

# NUMBERING HEADS

1,5-2-2,5-3 MM

**For impact.**  
Manual numbering head with wheels up to 3 mm character height.  
Easy regulation of the numbering through pulling shaft.



MB5

# SECURITY BOX

FOR PNEUMATIC MACHINES

Two buttons pneumatic security systems, complete of anti-ripetitive valve according to the CE machines directory.

Two models: Security 1 for impact and presses;  
Security 2 for hot systems thanks to a timer.



SHIELDED  
START  
BUTTONS



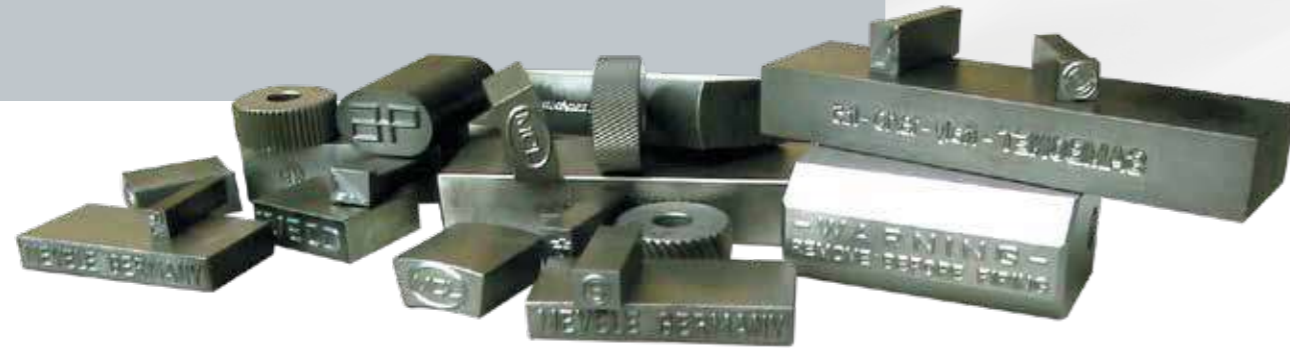
|                        |              |
|------------------------|--------------|
| Dimension (mm)         | 380x200x60   |
| Fluid                  | filtered air |
| Pressure (bar)         | 2-8          |
| Fluid temperature (C*) | -10 / +60    |

# HEAD STAMPS AND ENGRAVED DIES

## FOR ALL THE MACHINES

Hand punches available in units or set of letters and numbers, in character height from 1 mm to 12 mm standard, mirror or nuclear.

Special dies in hardened steel in any shape and engraving to reproduce perfectly logos and drawings.

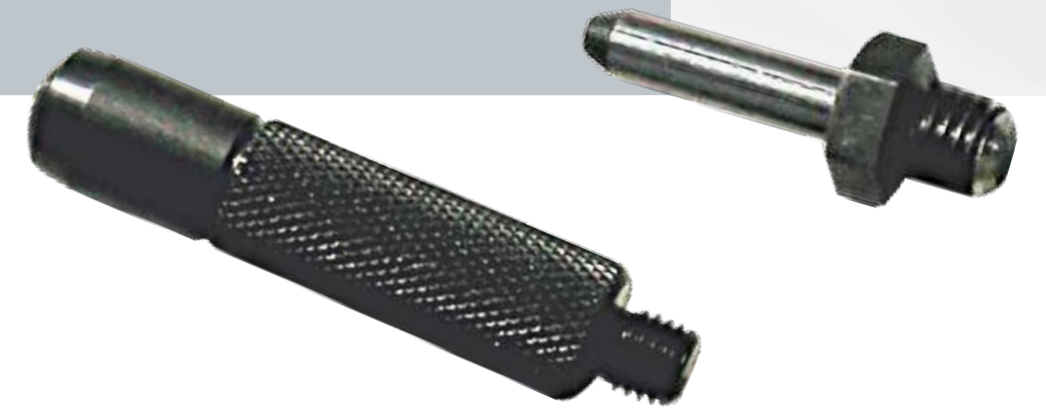


# SHANKS

## FOR IMPACT

Shanks are the natural union between cliché, punches, type holders, numbering heads and marking machines.

Available in various sizes depending on the different models.



Ø 6 - 8 mm  
MB15-19-19VPN



Ø 10 mm  
MB20-21-21VP



Ø 16 mm  
MB32-35-35VP



Ø 20 mm  
a mano - hand - manual



# DOVE TAILS

## FOR ROLL MARKING

Perfect coupling between rolling machine and typeholders or numbering heads.



MB76EPV  
MB76EP90°

MB71E  
MB71N  
MB71CE

MB41N  
MB41E

# TABLES

## FOR ALL MACHINES



MOD. T



MOD. TG

|                | MOD. T        | MOD. TG                   |
|----------------|---------------|---------------------------|
| Dimension (mm) | 600x600 h 830 | 600x600 h max 750         |
| Shelf (mm)     | 600x600 h 40  | 600x600 h 40              |
| Machines       | MB32-41       | MB15-19-20-21-32-35-41-71 |



# SUPPORTS

## FOR ROLL MARKING

Holding supports:  
S1 for round and cave components;  
S2 for round parts hold from the external.



S1R MINION



S2R MINION



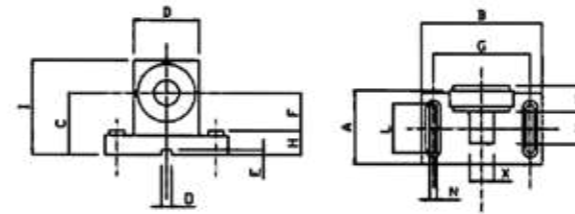
S2R MINION  
EXTENSIBLE



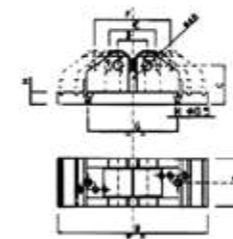
S1R



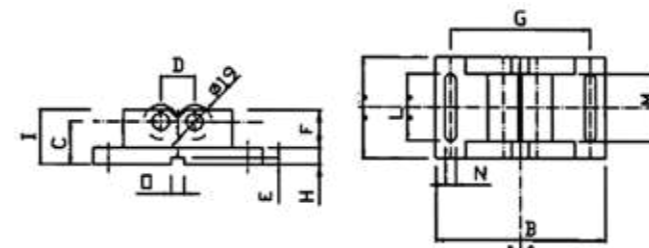
S2R  
EXTENSIBLE



S1RM/S1R



S2RM



S2RE

|     | S1RM<br>MB41 - MB71 | S2RM<br>MB41 - MB71 | S1R<br>MB41 - MB71 | S2RE<br>MB71 |
|-----|---------------------|---------------------|--------------------|--------------|
| A   | 60                  | 60                  | 89                 | 80           |
| B   | 100                 | 100                 | 175                | 250          |
| C   | 51                  | 25                  | 74                 | 62           |
| D   | 52                  | 20,2                | 75                 | 44           |
| E   | 4                   | 4                   | -                  | 59           |
| F   | 33                  | 39,5                | 48                 | 58           |
| G   | 80                  | 80                  | 139,5              | 237          |
| H   | 17                  | 10                  | 26                 | 20           |
| I   | 75                  | 32                  | 109                | -            |
| L   | 40                  | 40                  | 62                 | -            |
| M   | 30                  | 40                  | 52                 | -            |
| N   | 6,5                 | 6,5                 | 8                  | 11           |
| X/Y | 20+optional         | -                   | 20+optional        | -            |
| Ø   | -                   | 19                  | -                  | 48           |

# SUPPORTS

## FOR ROLL MARKING ON FLAT SURFACES

SR100 support for circular special dies and conical typeholders.

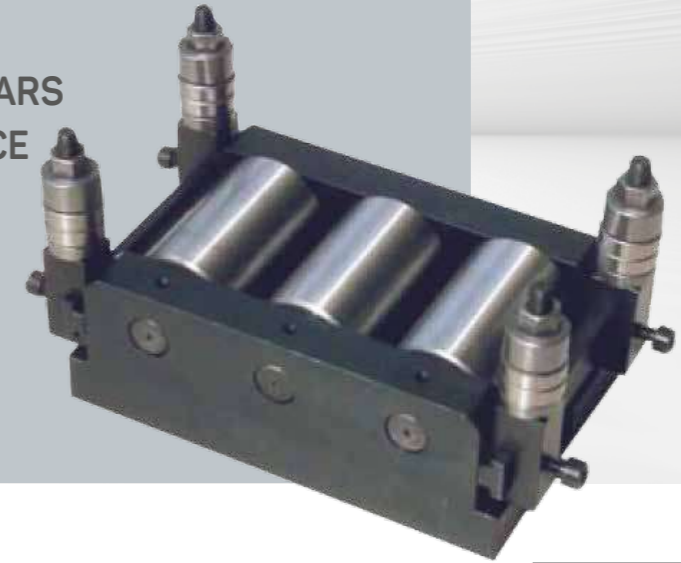


SR100

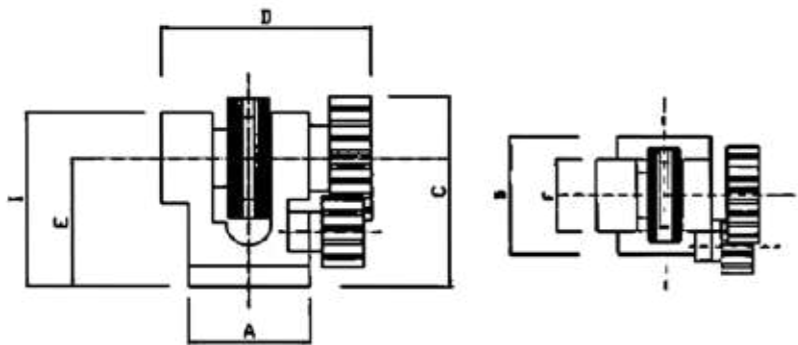
# SUPPORTS

## FOR EXAGONAL/SQUARE BARS TO BE MARKED WITH MB71CE

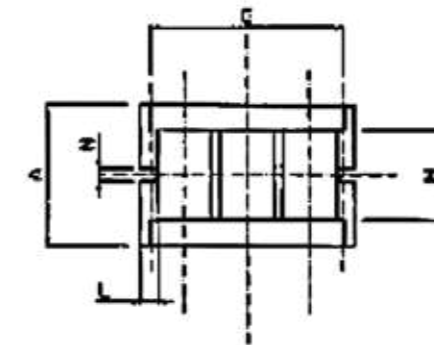
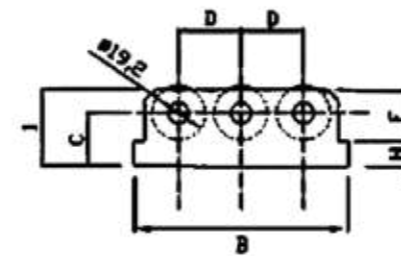
SR3 support with 3 rolls or 2 rolls and a central special die.



S3R



|   | SR100<br>MB71 |
|---|---------------|
| A | 58            |
| B | 73            |
| C | 92            |
| D | 97            |
| E | 67            |
| F | 43            |
| G | -             |
| H | -             |
| I | 83            |
| L | -             |
| M | -             |
| N | -             |
| O | -             |
| Ø | -             |



|   | S3R<br>MB71CE |
|---|---------------|
| A | 110           |
| B | 170           |
| C | 42            |
| D | 49            |
| E | -             |
| F | 40            |
| G | 150           |
| H | 20            |
| I | 60            |
| L | 15            |
| M | 70            |
| N | 10            |
| O | 8             |
| Ø | 42            |

# E1030 E1250

Chem-Etch machine kit, cost effective, for good contrast in marking conductive metals. In a small box, there are 1 hand stamp 20x40mm and the electrolytic unit; 100 blank stencils 75x56mm and a contact plate with cables and 2 liquids.

Two models available, different in the power, from 30VA for 1030 to 60VA for E1250, and in the output, adjustable from 6 to 12V for E1250.

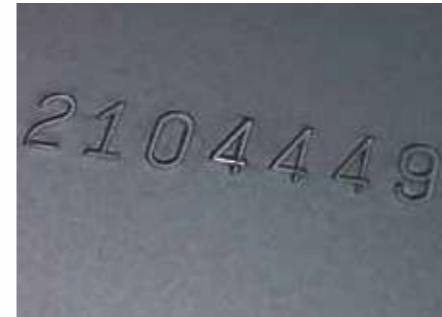


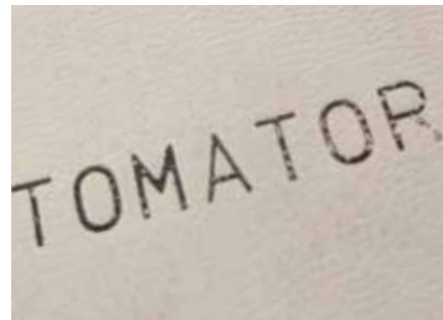
**IT'S EASY EVEN FOR CREATING MASKS OR STENCILS, USING THE BENCH OF A PC - CONNECTING LABELLING MACHINE.**

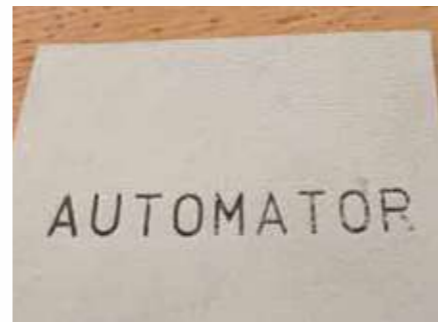
- Two different chem-etching solutions
- A wide range of liquids for different materials reactions
- Custom-made stencils on request



# MARKINGS ON ALL SURFACES









**Automator Marking Systems Srl**

20094 Corsico (Milano) - Italy  
Via Meucci, 8  
Tel. +39 02 48601445  
Fax +39 02 48601503

[www.automator.com](http://www.automator.com)

